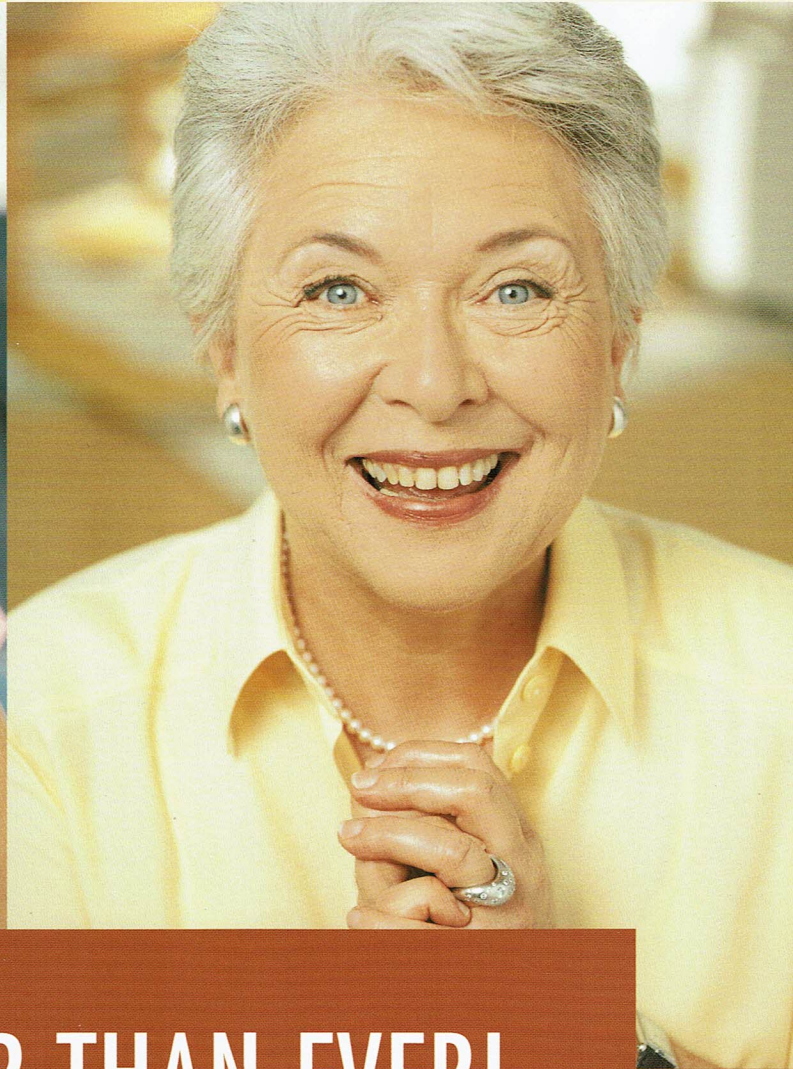


Paris 6:30 PM

Cannes 6:32 PM



WEB TOUCH
plus

INTERNET, SIMPLER THAN EVER!



**ONE-TOUCH
INTERNET
ACCESS**

IT'S USER-FRIENDLY WITH A COLOUR TOUCH SCREEN, A RETRACTABLE KEYBOARD AND INTEGRATED TELEPHONE. TOP OF THE WEBTOUCH® RANGE, THE ALL-IN-ONE **WebTouch® Plus** WILL MAKE IT EASIER TO GET CONNECTED FROM HOME.



ALCATEL



INTERNET, SIMPLER THAN EVER!

KEY FEATURES

- Plug and surf device
- One-key Internet access
- Colour touch screen
- Hands-free mode (full duplex)
- 56 Kbps modem (V90)
- Parallel printer port
- Serial port
- Extra-large keyboard
- Compact design
- Stylus holder

USER BENEFITS

- Instant access to the Internet
- Instant access to services (shopping, leisure, banking)
- Fits everywhere
- Fashionable product
- Anyone can use it
- "I quickly check the time for a movie and then call my friends with my WebTouch"
- "It doesn't leave my sight"

COLOURS



DARK GREEN



SAND WHITE

Colour touch screen	VGA 7.5" (640x480), 256 colours, Adjustable brightness, screen saver mode
Keyboard	Retractable alphanumeric keyboard
Network connection	One line on PSTN (analog) + modem 56 kbps, V90
Peripheral extensions	Smart card reader ISO 7816 1-2-3 (optional) Parallel printer port Serial port
Web browser	Access to Internet sites Supported protocols: HTTP 1.1, HTTPS SSL3 (40- & 128-bit encryption), HTML 3.2, Java Applets, Javascript, Cookies, Mail to, Multiple window.
E-mail	On- or off-line e-mail creation Supported protocols: SMTP, POP3 Attachments supported: text, HTML, images (GIF, JPEG), sound (WAV, AU).
Advanced telephone	Hands-free mode (full duplex) Mute List of 20 last incoming and outgoing calls Call duration display Dial by name Selective ringing with caller ID*. <small>*services available upon subscription with your operator</small>
Directory: 200 entries	Telephone and GSM numbers, e-mail and Internet addresses.



Engineered by
ATLINKS

An ALCATEL/THOMSON multimedia
Joint Venture Company